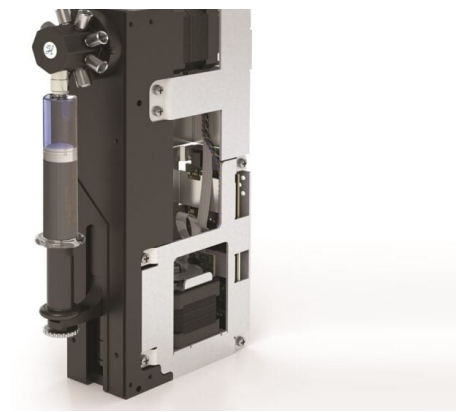


# PSD/6 High Valve Torque and Lift Force

Specification Sheet (Part/REF # 99198-01)



## Product Specifications

Accuracy	±1% @ 100% of stroke
Precision	0.05% @ > 100% stroke
Fluid Path	Borosilicate glass, PTFE, PFA, CTFE, ETFE, UHMW-PE, or ceramic
Weight	4.2 lbs (1.9 kg)
Power Requirements	24 VDC, 1.5A max
Syringe Drive Mechanism	Stepper motor driven lead screw and optical encoder
Syringe Speed	8.1 seconds to 228 minutes per full stroke
Syringe Stroke Length	60 mm
Syringe Resolution	Selectable 13,714 steps (standard) / 109,714 steps (high)
Syringe Drive Linear Force Capability	40 lbf. (18.1 kgf.)
Valve Drive Type	Direct Drive DC stepper motor with 15 degree resolution and optical encoder.
Valve Drive Speed	250 ms per 120 degree rotation
Valve Drive Torque	75 (in oz)
Valve Fittings	¼-28
Communication Interface	RS-232, RS-485, CAN
Communication Protocol	Terminal and Standard
Baud Rate	9600 or 38400 (RS-232, RS-485) and 100,000 or 125,000 (CAN)
Data Bits	8
Parity	None
Stop Bit	1, Half duplex
Daisy Chain Length	Up to 16 syringe pumps or valve positioners
Operating Temp High	40 °C (105 °F)
Operating Temp Low	15 °C (60 °F)
Operating Humidity	20% to 95%, non-condensing
Storage Temp High	65 °C (150 °F)
Storage Temp Low	-20 °C (-4 °F)
Storage Humidity	20% to 95%, non-condensing
RoHS 3 Compliant	Yes
Dimensions (D x H x W)	4.99 in x 8.99 in x 1.75 in

Specifications are subject to change without notice

<https://www.hamiltoncompany.com/oem/99198-01>

Spec. Version B