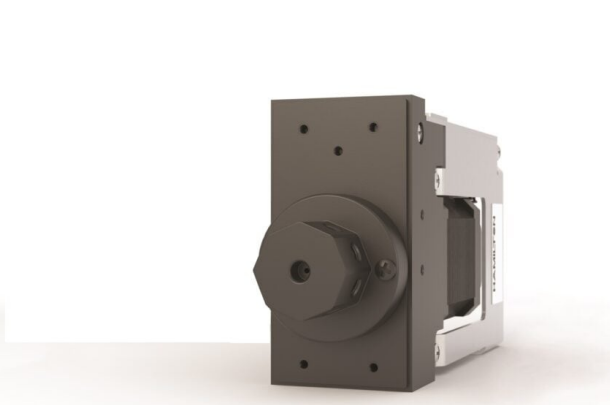


MVP/4 Standard

Specification Sheet (Part/REF # 94747-01)



Reliable valve positioning for distribution, loop, and custom designed fluid paths. Inert PTFE and Ceramic designs with exceptional service life.

Product Specifications

Fluid Path	PTFE, CTFE, or ceramic
Weight	1.75 lbs (0.79 kg)
Power Requirements	24 VDC, 1.7A max
Valve Drive Type	Direct Drive DC stepper motor with 15 degree resolution and optical encoder.
Valve Drive Speed	250 ms per 120 degree rotation
Valve Drive Torque	25 (in oz)
Valve Fittings	¼-28
Communication Interface	RS-232, RS-485, CAN
Communication Protocol	Terminal and Standard
Baud Rate	9600 or 38400 (RS-232, RS-485) and 100,000 or 125,000 (CAN)
Data Bits	8
Parity	None
Stop Bit	1, Half duplex
Daisy Chain Length	Up to 16 syringe pumps or valve positioners
Operating Temp High	40 °C (105 °F)
Operating Temp Low	15 °C (60 °F)
Operating Humidity	20% to 95%, non-condensing
Storage Temp High	65 °C (150 °F)
Storage Temp Low	-20 °C (-4 °F)
Storage Humidity	20% to 95%, non-condensing
RoHS 3 Compliant	Yes

Specifications are subject to change without notice
<https://www.hamiltoncompany.com/oem/oem/94747-01>

Spec. Version B